

MIDDLE SCHOOL INDUCTION

Head of Middle School:

Mrs M.J. Jenner

Assistant Heads of Middle School:

Mr B.W. Denham

Mrs L.C. Drummond



ARRIVAL AT AND DEPARTURE FROM SCHOOL

- ✘ Years 7-9 should enter and leave via the Exeter Street Gate**
- ✘ There will be sanitiser stations near the entrance which you must use on their way in**
- ✘ If you arrive earlier than the scheduled start to the school day then you must make your way immediately to your designated outdoor space (Sports Hall yard for yr9) and stay there (unless it is raining – when you have the option of going to your tutor base and staying there instead...).**

TUTOR GROUP INFORMATION

- × **9J** **Mrs S Lawrence** **W1**
- × **9M** **Mrs S White** **E1**
- × **9O** **Mr J Oldham** **E2**
- × **9P** **Mr B Denham** **E3**
- × **9W** **Miss Deakin** **W10**
- × **Please be prompt to registration. Assemblies will be delivered in your tutor bases via Teams.**



NEW SCHOOL DAY TIMES



Session	Start	Finish
Registration/Assembly	9.30	9.40
Period 1	9.40	10.10
Period 2	10.10	10.40
Break	10.40	10.50
Period 3	10.50	11.20
Period 4	11.20	11.50
Change Over	11.50	12.00
Period 5	12.00	12.30
Period 6	12.30	13.00
Lunch	13.00	13.40
Period 7	13.40	14.10
Period 8	14.10	14.40
Change Over	14.40	14.50
Period 9	14.50	15.20
Period 10	15.20	15.50

ORGANISATION- REMEMBER

- ✘ You will need a copy of your timetable that you can consult when packing your bag or when in School to find out where you are supposed to be.
- ✘ You may want a note of the lesson timings too. It will take a lot of adjustment to get used to the new timings.



CHANGE OVER TIMES

- ✘ Clockwise one-way systems in place around through E Block. Direction of travel through the Maths Block is in the same direction as you are used to upstairs.
- ✘ The Dining Hall will not be open
- ✘ No ball or yard games allowed



LUNCHTIMES FOR YR9

- ✘ Your communal space will be the SPORTS HALL YARD.
- ✘ Dining Hall Rota- Wednesday Lunchtimes
- ✘ You must choose one person each day to go collect pre-ordered sandwiches on other days and return them to the form room
- ✘ Bring your own lunches if you wish please remember that nuts or products containing nuts are NOT allowed)
- ✘ Library Rota- Thursday Lunchtimes
- ✘ IT Suite Rota (IT1 & 2 only)- Friday Lunchtimes



LUNCHTIMES

- ✘ Middle School Office and Pastoral Support will be manned at lunchtime. Should you need us, please try to remember to bring your mask with you. If the office is busy you may be asked to wear it.



THE DINING HALL

- ✘ Your parents have been sent details about the ordering service for the Dining Hall. Make sure you are aware if your parents have ordered food for you so there is no confusion. Remember lunchtime is short so your priority must be to eat your lunch. Make sure you have sanitised your hands before you do so.
- ✘ Packed lunches will need to be collected in a tray from the Dining Hall by a designated member of the tutor group and delivered to the tutor room at the start of lunch.

THE DINING HALL

- ✘ Pre-ordered hot meals will be available to Year 9 on a Wednesday lunchtime in the Dining Hall.
- ✘ Please make sure that you clear up after yourselves. Use the bins provided or take your litter home.

RECEPTION

- ✘ Reception will operate a strict one-in, one-out arrangement (including staff, students and visitors) with all entrants using the hand sanitiser before entry.
- ✘ There must never be more than **5 people** in Reception at any one time (including students).

SOCIAL DISTANCING AND HAND SANITISER

- ✘ Social distancing must be in place in areas such as the Library, ICT Suite and Dining Hall**
- ✘ Please keep socially distanced as much as possible throughout the site**
- ✘ You may choose to wear a mask where this proves difficult**
- ✘ Hand sanitiser stations are placed throughout the site. Please use them, or your own supply, when directed.**

PERSONAL HYGIENE

Prevention



Wash

your hands well and often to avoid contamination



Cover

your mouth and nose with a tissue or sleeve when coughing or sneezing and discard used tissue



Avoid

touching eyes, nose, or mouth with unwashed hands



Clean

and disinfect frequently touched objects and surfaces

TOILETS

- ✘ There will be no allocation of toilets to specific year groups (as this is not practical), but there will be a limit of 2 pupils at any one time in a loo area with multiple cubicles.
- ✘ The urinals will be marked as out of use
- ✘ Don't forget to wash your hands for at least 20 seconds

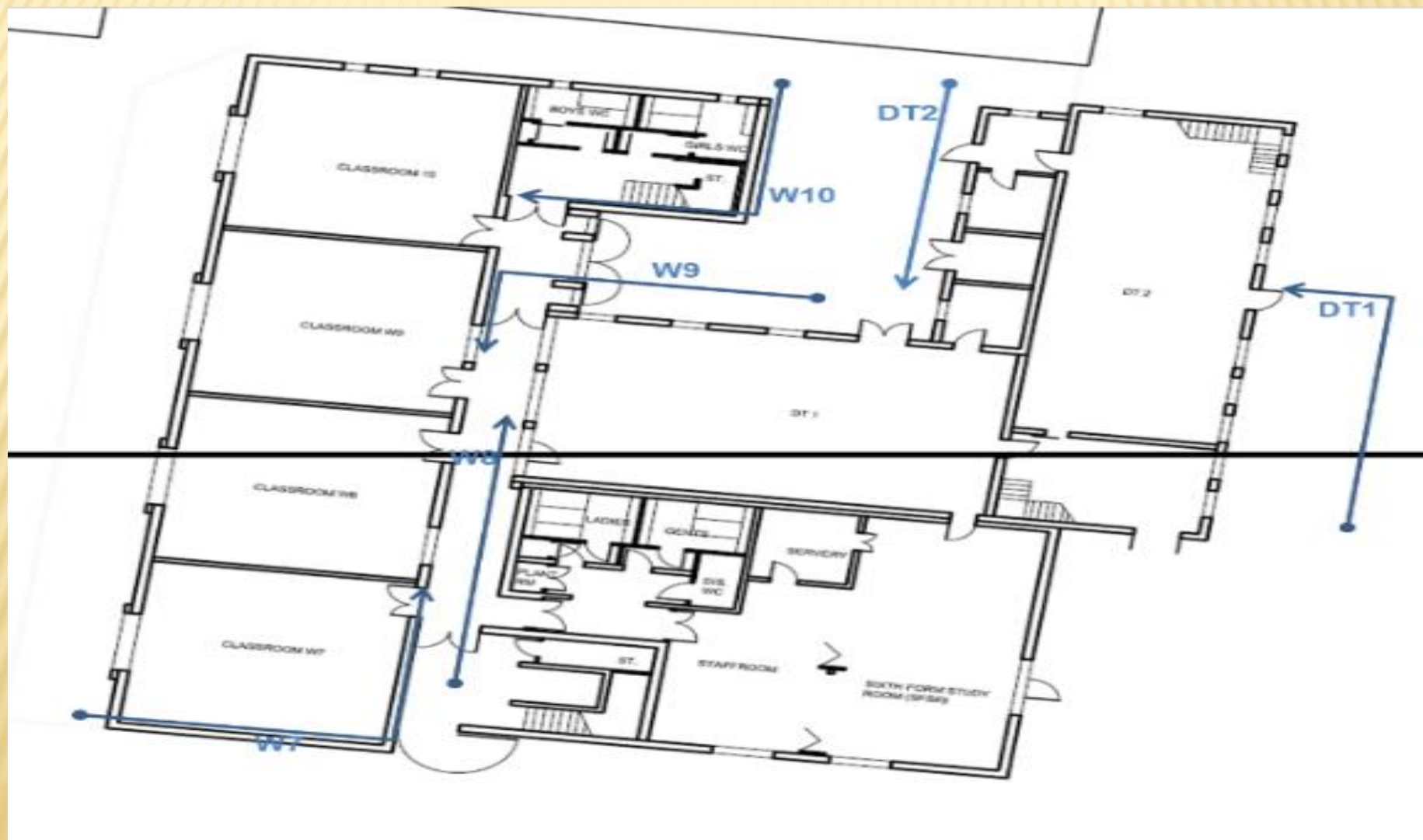
LINING UP FOR CLASSES

- ✘ There are boards and signs to mark out new locations for where you should line up before lessons. (These could change in light of experience)**
- ✘ Some subject lessons will take place in subject specific areas eg Art, DT, Music, Drama, PE and some science lessons.**
- ✘ Other lessons have been timetabled to minimise student movement and mixing of bubbles**

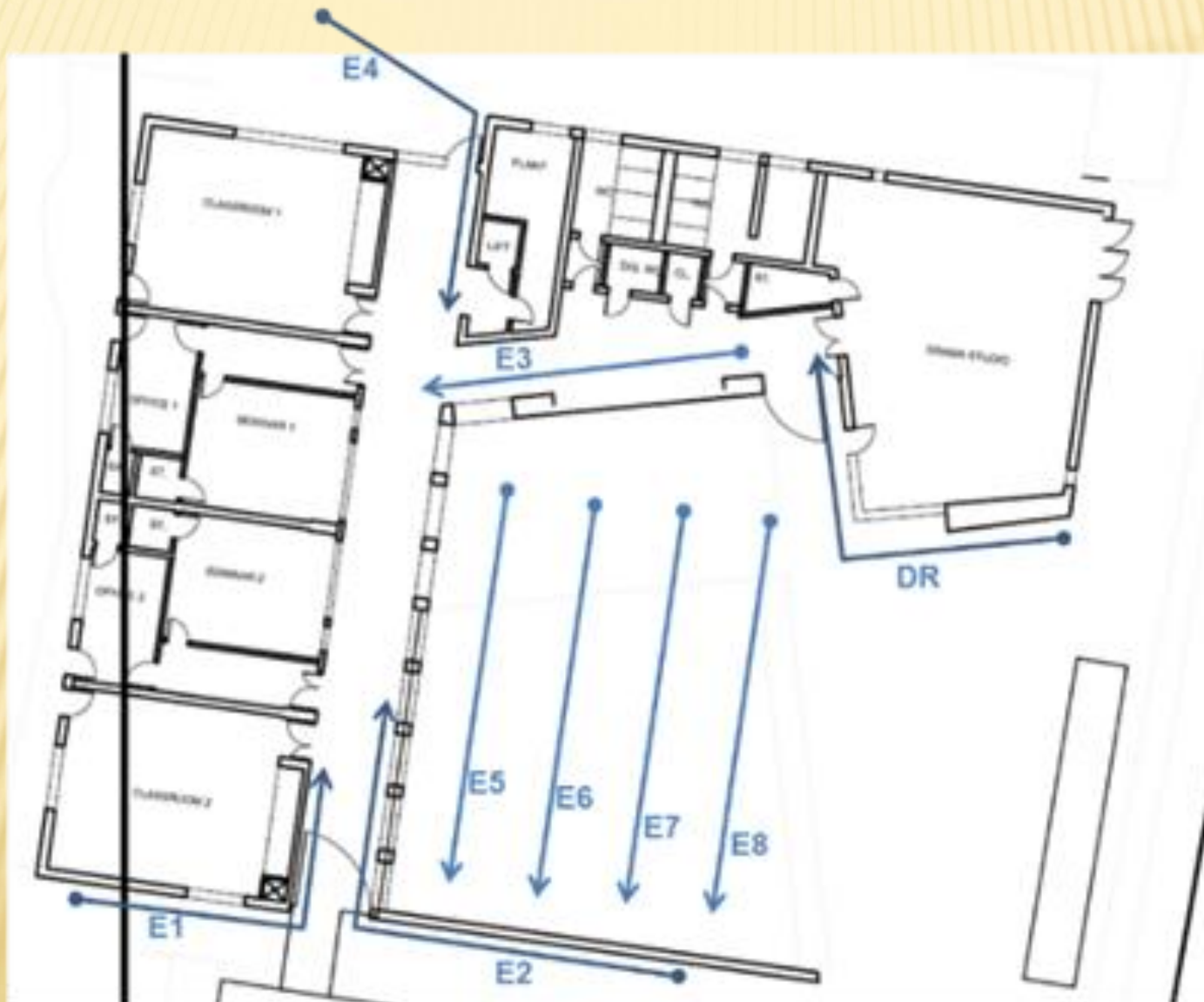
LINING UP FOR CLASSES

- ✘ Year 9 classroom lessons are limited to E1, E2, E3, W1, W10.**
- ✘ If you have lessons in W10 please do not block the stairs entrance. Boys from other Year group bubbles will require safe passage to the rooms upstairs and downstairs in the rest of the Maths block.**
- ✘ In the event of a fire alarm you should line up in your communal area.**

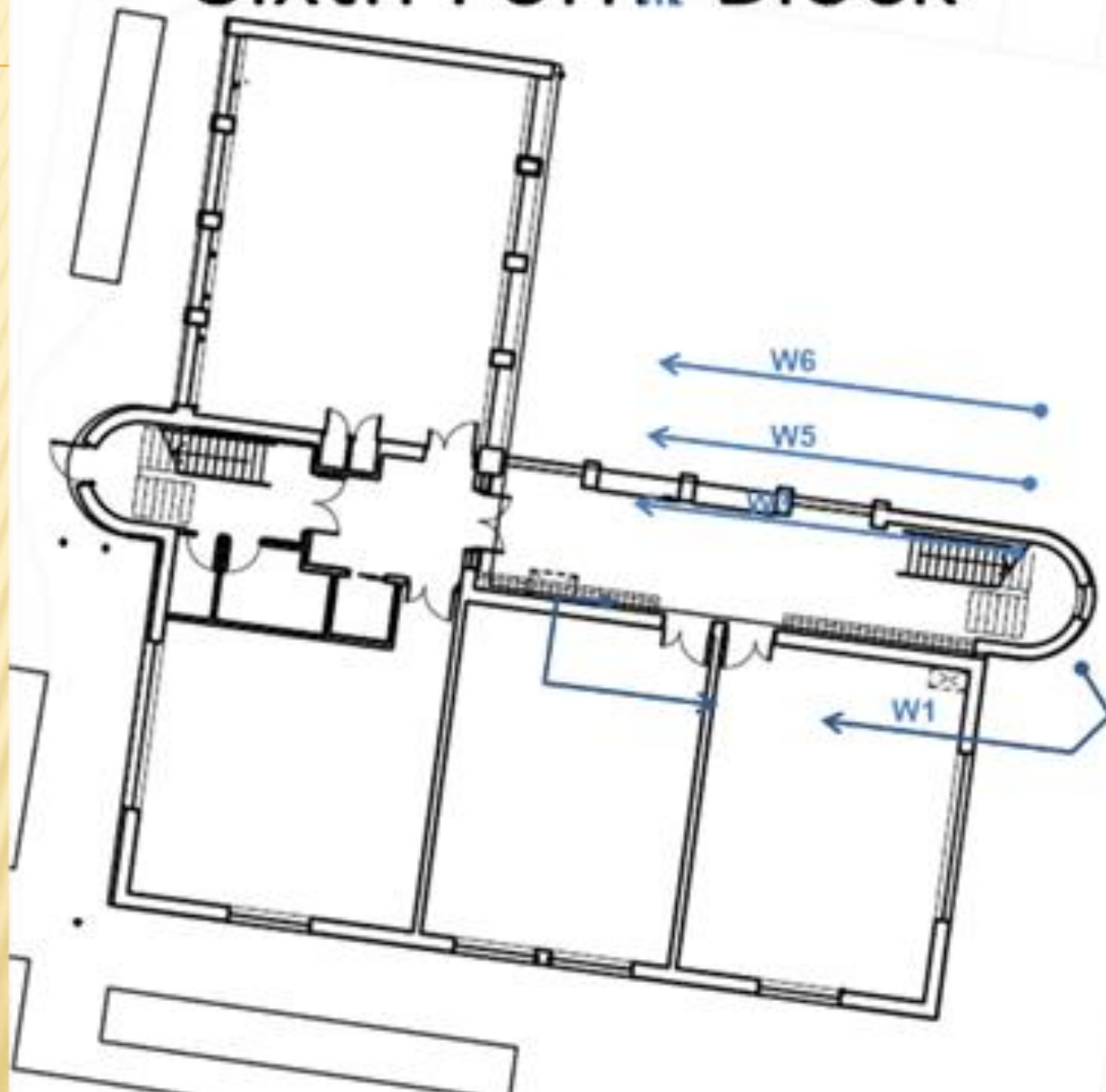
Maths and DT



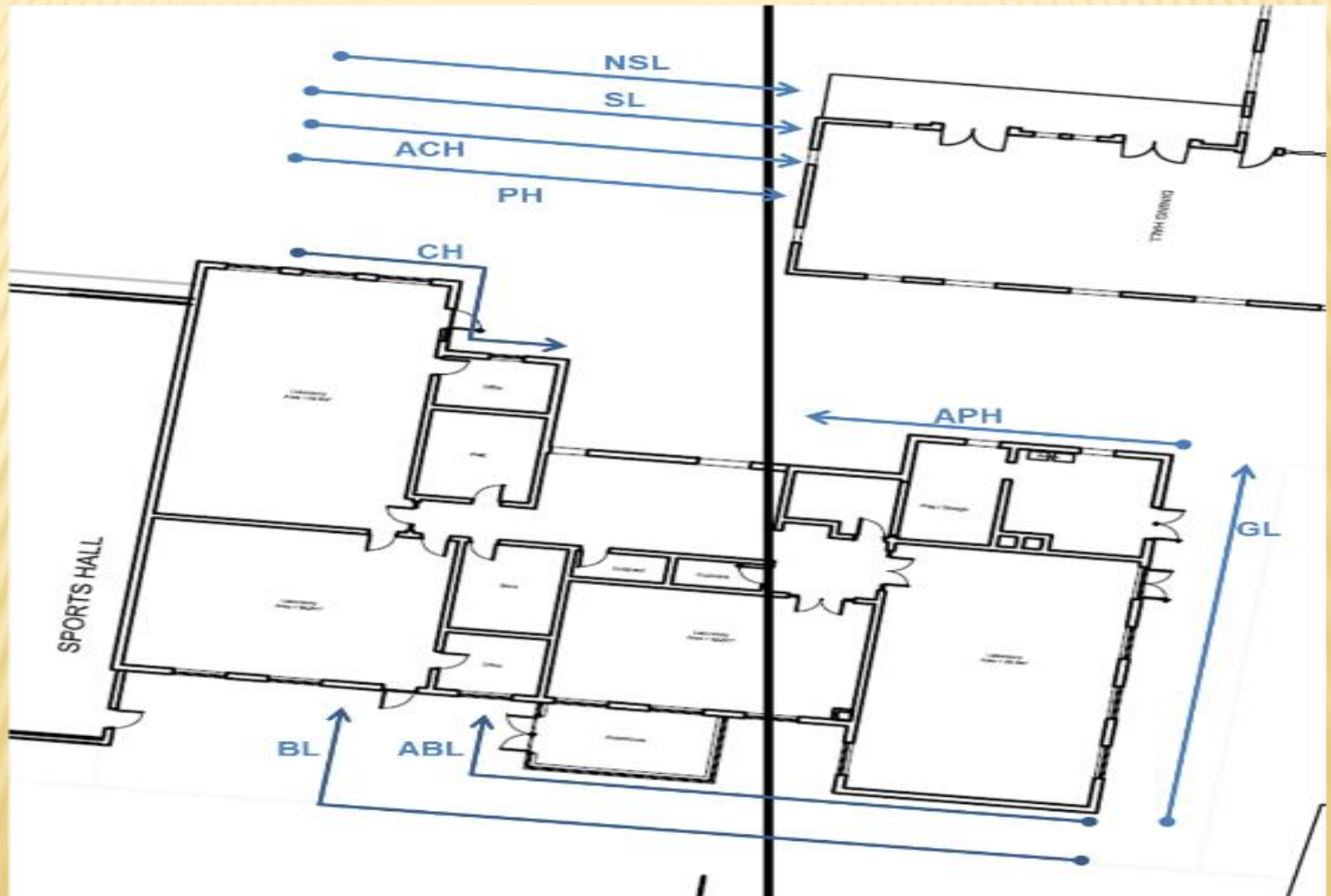
Paddock Block



Sixth Form Block



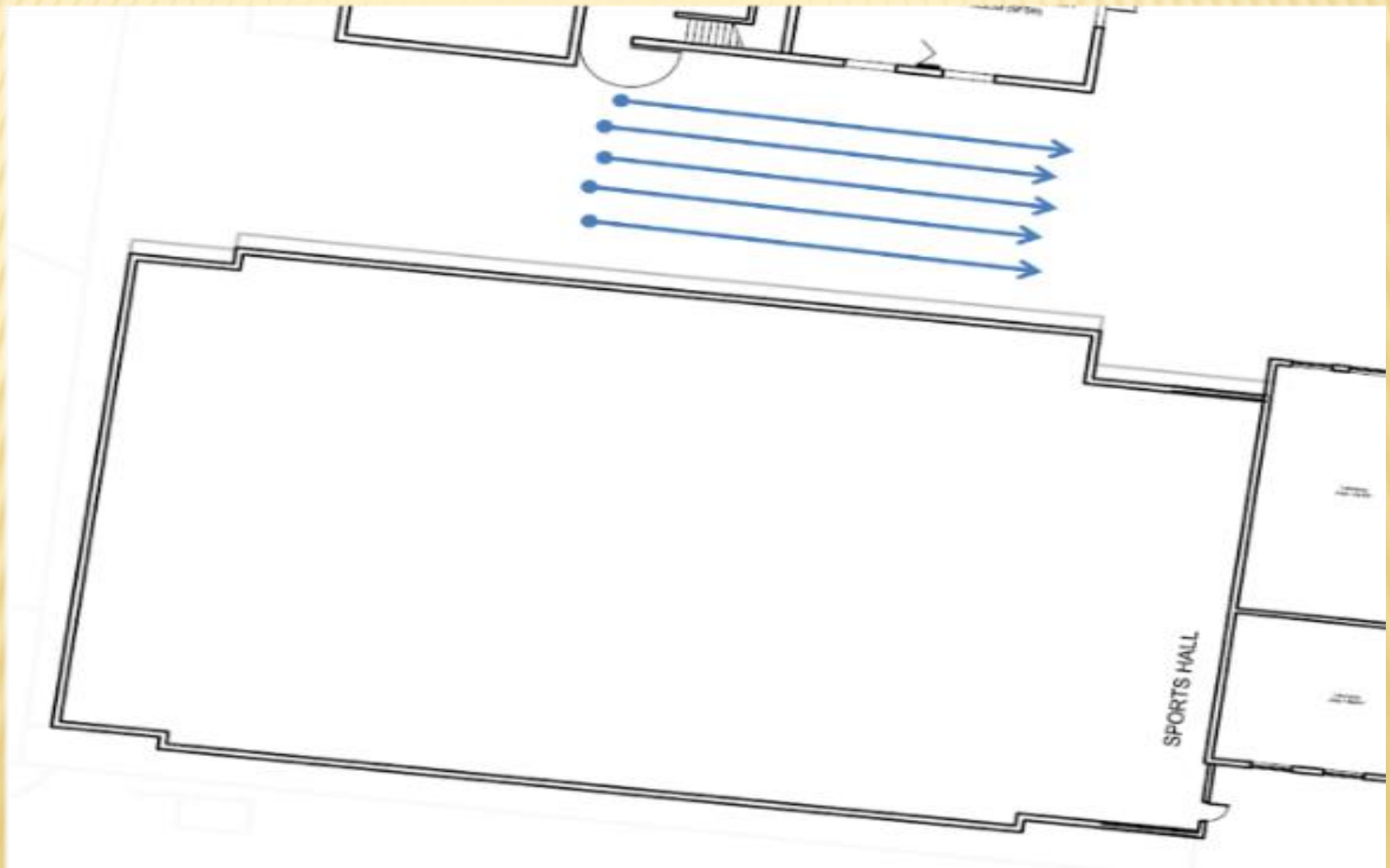
Science Block



SCIENCE

- ✘ As with other areas you will be asked to sanitise your hands before entry to the block.
- ✘ Hand sanitiser is flammable, so if you are doing a practical you will be asked to wash your hands with soap and water. You will also be asked to wash them after the practical. These are rules set out by CLEAPPS and are not negotiable.
- ✘ Masks will need to be worn during practical work due to movement around the lab (this will apply in Art and DT too)

Sports Hall



CHANGING FOR PE

- ✘ Please arrive already changed in school games kit (including track suit bottoms) when you have PE or Games scheduled that day.
- ✘ Therefore changing will not be needed!
- ✘ Later in the term you may be asked to bring in indoor trainers / boots.

MUSIC

- ✘ All Music lessons for Year 9 will start in the BMR. Wait in the yard to be let in through the blue door by Mr Edney or Mrs Hind (no pupil should enter the building on their own unless they are coming for an instrumental lesson)
- ✘ Choir - you will be the only people in the building at 0830 so please go straight to the BMR via the yard or SMR using the front door (you will be told where your rehearsal is)

MUSIC

- ✘ **Ensembles at lunchtime - make your way to the Yard with the blue door at the beginning of lunch as quickly as possible on the day of your rehearsal and Mr Edney or Mrs Hind of staff will take you to the rehearsal room.**
- ✘ **Instrumental lessons - there will be a one way system in place to go via the instrument store to the rooms for peripatetic lessons. Please keep to this and do not cross other pupils in the corridors (if you've forgotten something you'll need to go all the way around again)**

OTHER IMPORTANT NOTES

- ✘ Only one school bag should be brought in by each pupil; no games bags will be permitted;
- ✘ Ensure you have everything you need with you. You should not be sharing any equipment;
- ✘ Belongings that are left on site at the end of the school day will be disposed of immediately;
- ✘ Year groups will be the designated 'bubbles'; contact will be minimised between boys of different year groups as much as possible;
- ✘ The school day will start later than normal but finish at 1550 so as to avoid peak travel times;

HOMework AND ORGANISATION

- ✘ All homework will be set on Teams
- ✘ You must adhere to the deadlines set; assessing work and giving feedback on Teams is often more difficult and time consuming for staff
- ✘ If you are absent for any reason you should be able to use Teams to catch up with work missed
- ✘ If we go into any form of lockdown then Teams will be used to deliver the curriculum



ACADEMIC & PERSONAL PROBLEMS - WHO CAN HELP?

- × A friend
- × Your teacher
- × Your form tutor
- × Another teacher of the subject
- × Head or Assistant Heads of Middle School
- × Senior Tutor
- × SENCO/Learning support team
- × School Nurse
- × School Chaplain
- × Pastoral Support Officer
- × Safeguarding Team



-
- × https://www.youtube.com/watch?v=9Tv2BVN_WTk
 - × <https://www.youtube.com/watch?v=seA1wbXUQTs>



MIDDLE SCHOOL OFFICE OPENING TIMES

- × **Before School:- 08.30 – 09.30**
- × **Lunchtimes:- 13.00 – 13.40**
- × **After School:- 16.00 – 17.00**



**WE DO NOT
LEND MONEY!**



YEAR 9 – IMPORTANT TIMES

Autumn Term

November(2020 only)

Grade Reports

Spring Term

January:

Follow-up to reports

February:

Options Information Evening
for parents / assembly for
students

Full report

Parents' Evening

March:

Options decisions made

Follow up to reports



YEAR 9/10 – IMPORTANT TIMES

Year 9 Summer Term

May: Assessment Week
June: Exam results report

Year 10

December: Grade Reports
January: By Invitation Parents' Evening
March/April: School Examinations
May: Full Reports
and Parents' Evening
June / July: Academic Assessment Interviews



YEAR 11 – IMPORTANT TIMES

Grade reports (October)

Year 12 Recruitment and applications

GCSE Prelims (November/December)

**Full Reports and Parents' Evening
(January)**

Academic Assessment Interviews

GCSE Exams begin (May)

Book Collection

GCSE Exam Results



EXPECTATIONS

- × **New office**
- × **Form tutor**
- × **New subject teachers / grading system**
- × **Attendance**
- × **Uniform**
- × **Phones and lockers**
- × **Setting an example**



CARE OF YOUR CLASSROOM

- ✘ It is a privilege for you to be allowed into classrooms out of lesson time as appropriate.
- ✘ It is your responsibility to keep your allocated room tidy.



CARE OF YOUR CLASSROOM

- × All litter in the bins
- × Damage should be reported
(you may be charged)

- × Ensure that the room is tidy before leaving it.



ATTITUDES TOWARDS OTHERS

- × **Set an example for younger pupils**
- × **Respect others in the Middle School**
- × **Be polite to older pupils and prefects**
- × **Be polite to teachers and other staff**



MIDDLE SCHOOL DRESS CODE

× Blazer

- × To be worn to and from School
(NO HOODIES!)

- × To be worn to and from lessons

- × Once in a lesson, the teacher may allow you to remove it



MIDDLE SCHOOL DRESS CODE

- × Grey / black trousers
- × White / light grey / light blue shirt
 - × Tucked in and top button done up!
 - × Any T-shirt or vest worn beneath a shirt must not have a visible pattern or logo
- × School tie
 - × Of suitable length
 - × Done up to collar



MIDDLE SCHOOL DRESS CODE

- × Jumpers (if worn they are not to be worn without a blazer)
 - × V - neck
 - × Plain grey or navy
- × Footwear
 - × Plain black or dark brown
 - × No trainers
 - × No white or vivid coloured socks or trainer socks



MIDDLE SCHOOL DRESS CODE

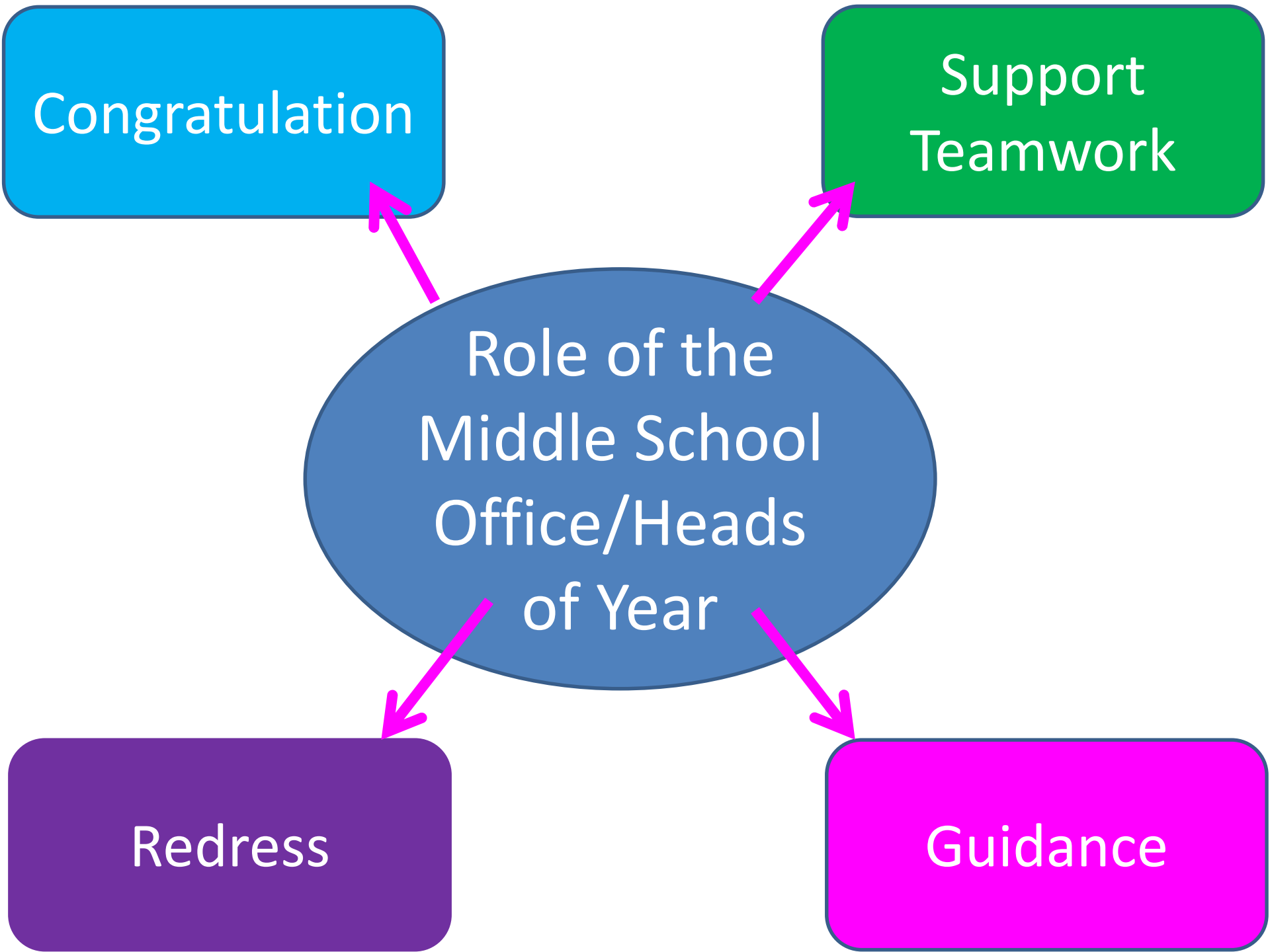
- × **Hair**
 - × **Neat and tidy**
 - × **Your natural colour**
 - × **No longer than collar length**
 - × **No facial hair**
- × **Coats – Not worn in lessons**



WORK - WHAT IS EXPECTED?

- × Submitted regularly and punctually
- × Up to 40 minutes of homework per day per subject allocated
- × Coursework is your responsibility
- × Catching up missed work is your responsibility





Focus on the Task

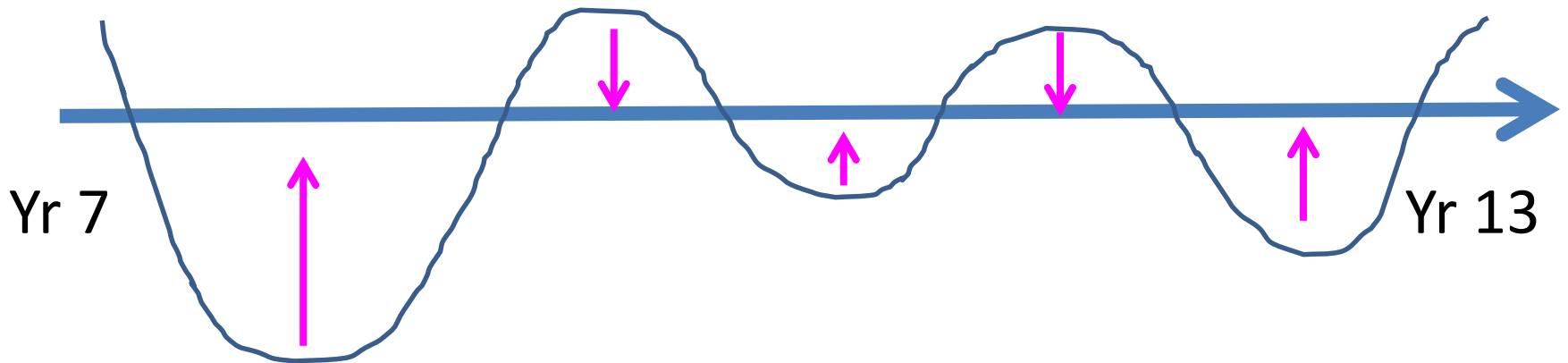
What does your future self look like?

Have High Standards

- Honesty
- Reliability
- Courtesy/Manners
- Service

Communicate

- Call others out
- Seek support



Be Resilient

- Peer Pressure
- Focus on what you want to achieve academically, on the sports pitch, creatively.....

Take Part

- Get out what you put in
- Acknowledge where you are

Believe@BWS



B

Be Brilliant



E

Engage in Learning





**Live your life
through
successful
choices**



I can do it



E

**End Goal –
Where do you
want to be?**



V

Voice
(Student Voice)



E

**Each and Every
one of you can
achieve and
succeed**



YOUR BEHAVIOUR IS YOUR CHOICE AND YOUR RESPONSIBILITY

